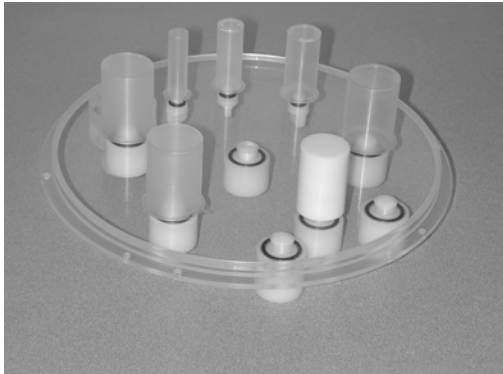


# Flangeless Esser PET Phantom™

## Flangeless Esser PET Phantom, with 2<sup>nd</sup> Deluxe

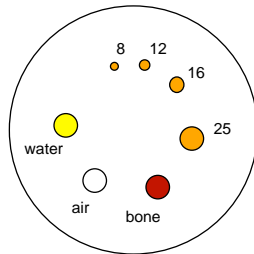
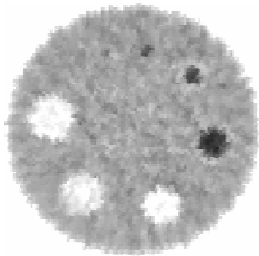
### Flangeless Lid™



*Flangeless Esser PET Phantom Lid™*



*Flangeless Esser PET Phantom™*



*Flangeless Deluxe Jaszczak Phantom™*

### Flangeless Esser PET Phantom™

Model PET/FL/P

Model PET/LID/REG (lid only Flanged)

Model PET/LID/FL (lid only Flangeless)

#### Main Features:

- PET phantom without protruding flange
- This phantom includes components Dr. Peter D. Esser adapted from the Deluxe Jaszczak Phantom

#### Main Applications:

- Evaluation of tumor delectability
- Evaluation of SUVs
- Acceptance testing
- Routine quality assurance and control
- Evaluation of reconstruction filters
- Evaluation of attenuation and scatter correction
- Research
- ACR recommended phantom

**MUST PROVIDE NMAP NUMBER, ADD ACR in front of Model Number**

#### Specifications of Cylinder:

Cylinder inside diameter: 20.4 cm  
 Cylinder inside height: 18.6 cm  
 Cylinder wall thickness: 6.4 mm

#### Specifications of Insert:

Rod diameters: 4.8, 6.4, 7.9, 9.5, 11.1 and 12.7 mm  
 Height of rods: 8.8 cm  
 Solid sphere diameters: 9.5, 12.7, 15.9, 19.1, 25.4 and 31.8 mm  
 Height of center of spheres from base plate: 12.7 cm

#### Specifications of PET Lid:

Refillable thin-walled cylinders: 8, 12, 16, 25 (x3) mm  
 Solid cylinder (Teflon®): 25 mm  
 Cylinder height: 1.5 in

**NOTE:** Above Lid can be made for Flanged or Flangeless Cylinder, call for details.

### Flangeless Esser PET Phantom, with 2<sup>nd</sup> Deluxe Flangeless Lid™

Model PET/FL-X2/P

Includes above described Phantom with Flangeless Deluxe Jaszczak Lid, see Information Sheet on Flangeless Deluxe Jaszczak Phantom for complete description

This product is available through **JRT Associates** 800-221-0111