

# Triple Modality Biopsy Training Phantom

Suspect lesions discovered in x-ray mammography must often be evaluated under ultrasound to aid diagnosis and in some cases, use of MRI may be indicated. This phantom is an ideal training device because it can be imaged under three modalities and was designed specifically for needle biopsy.

Each cystic mass may be aspirated once while each solid mass may be biopsied multiple times.



Model 051

## Features

- Compressible
- Physical density and attenuation characteristics accurately simulate that of an average 50% glandular breast (BR-12 equivalent) under x-ray, ultrasound, and MRI
- Phantom's flesh-like consistency simulates needle resistance found in human tissue
- Anthropomorphic shape is suitable for compression mammography or ultrasound examinations

This product is available through:

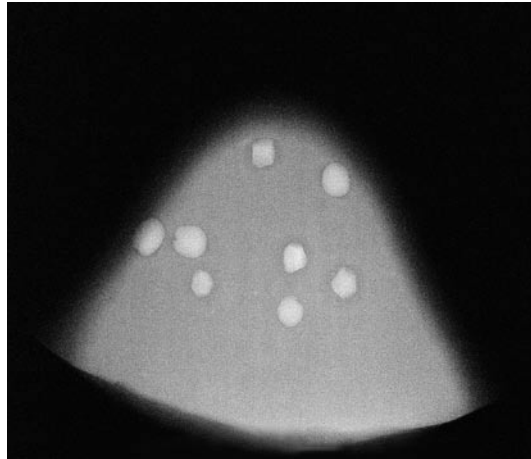
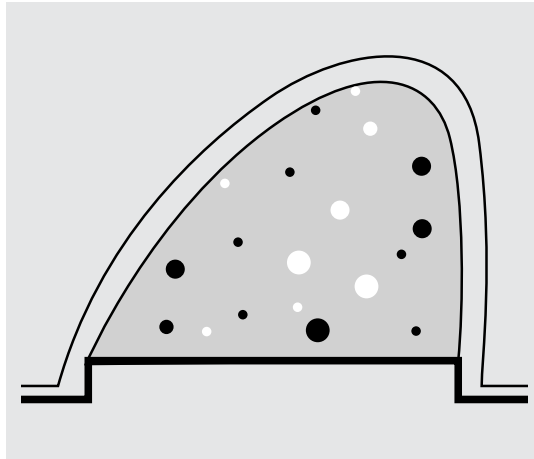
**JRT** Associates 800-221-0111

# Model 051 Specifications

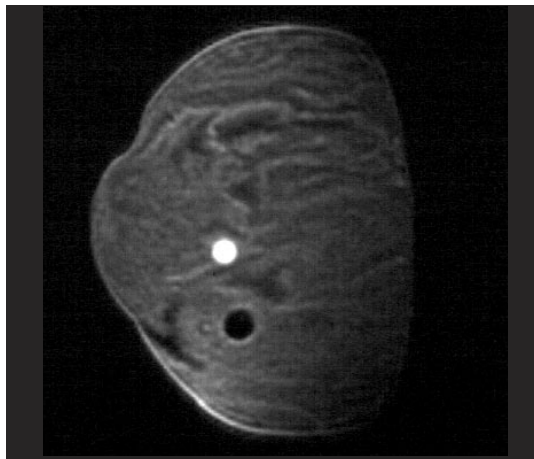
**SIZE:** 500 cc  
**LENGTH:** 12 cm  
**WIDTH:** 10 cm  
**HEIGHT:** 9 cm  
**MATERIAL:** Zerdine®

**Dense masses**  
 2 to 8 mm in diameter for core biopsy.

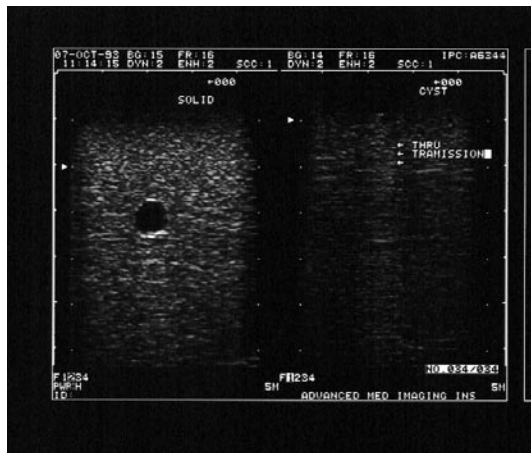
**Cystic Masses**  
 3 to 10 mm in diameter for needle aspiration.



X-ray mammography



MRI



Ultrasound